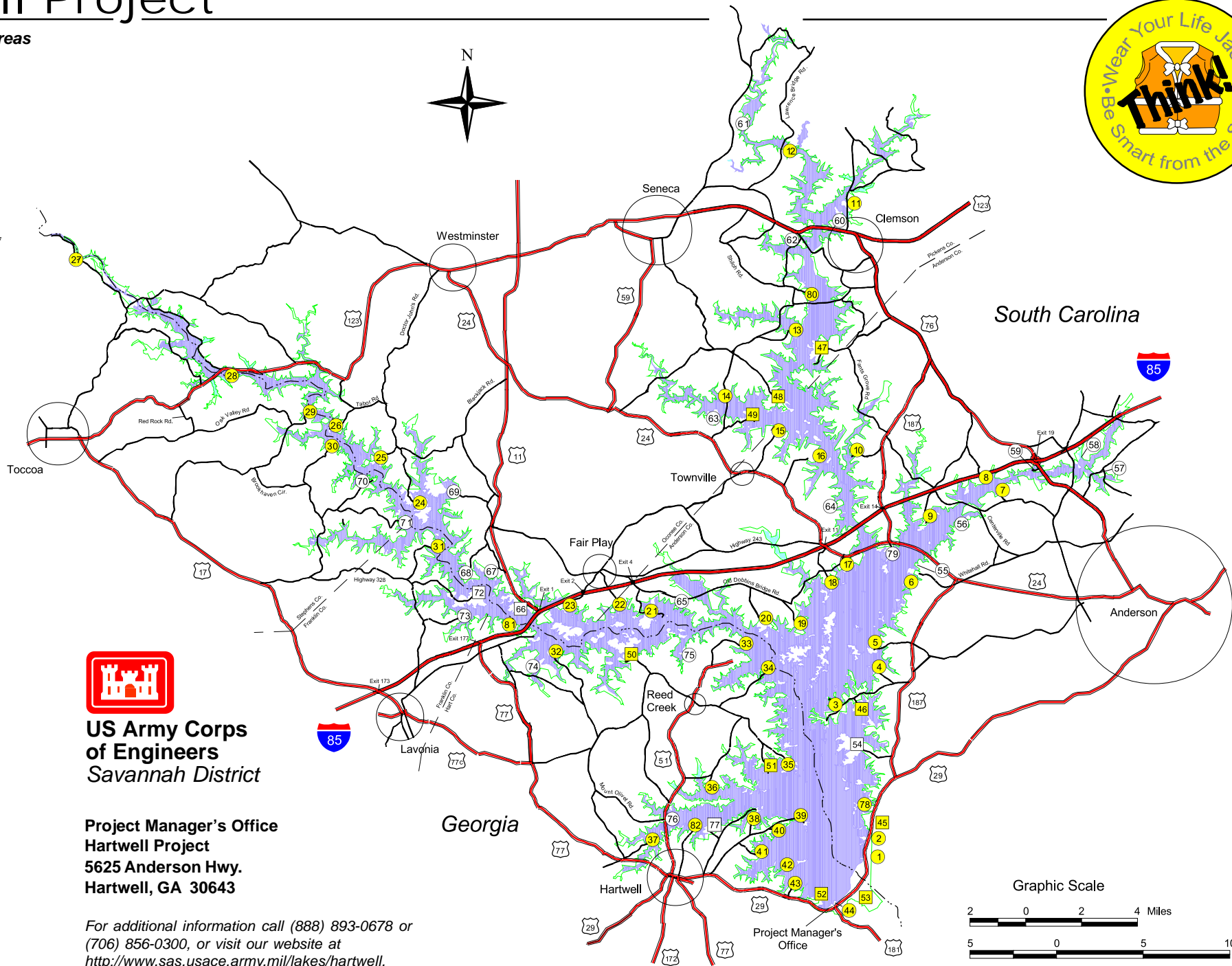


# Hartwell Project

## Corps Recreation Areas

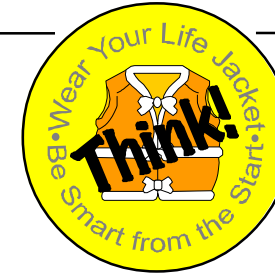
- 1 Hartwell Dam
- 2 Singing Pines
- 3 Jarrett\*
- 4 Richland Creek
- 5 River Forks
- 6 Green Pond
- 7 Honea Path\*
- 8 Denver
- 9 Asbury
- 10 Eighteen Mile Creek\*
- 11 Twelve Mile
- 12 Lawrence Bridge
- 13 Martin Creek
- 14 Friendship
- 15 Townville
- 16 Camp Creek
- 17 Broyles
- 18 Apple Island\*
- 19 Double Springs
- 20 Weldon Island
- 21 Glenn Ferry
- 22 Durham\*
- 23 Fair Play
- 24 Choestoea
- 25 Mullins Ford
- 26 Tabor\*
- 27 Walker Creek\*
- 28 Stephens County
- 29 Spring Branch
- 30 Jenkins Ferry
- 31 Poplar Springs
- 32 Rock Springs
- 33 Mary Ann Branch
- 34 Crawfords Ferry
- 35 Carters Ferry\*
- 36 New Prospect
- 37 Cleveland\*
- 38 Gum Branch
- 39 Long Point
- 40 Duncan Branch\*
- 41 Powderbag Creek\*
- 42 Elrod Ferry
- 43 Hartwell Group
- 44 Big Oaks
- 47 Twin Lakes
- 53 Georgia River



**US Army Corps  
of Engineers**  
Savannah District

**Project Manager's Office  
Hartwell Project**  
5625 Anderson Hwy.  
Hartwell, GA 30643

For additional information call (888) 893-0678 or  
(706) 856-0300, or visit our website at  
<http://www.sas.usace.army.mil/lakes/hartwell>.



## Corps Campgrounds

- 45 Crescent Group Camp
- 46 Springfield
- 47 Twin Lakes
- 48 Oconee Point
- 49 Coneross
- 50 Paynes Creek
- 51 Milltown
- 52 Watsadler
- 53 Georgia River

## State & Municipal Recreation Areas

- 54 Sadlers Creek State Park
- 55 Jack's Landing\*
- 56 White City\*
- 57 Brown Road\*
- 58 Darwin H. Wright
- 59 Hurricane Creek\*
- 60 Clemson\*
- 61 Holder's\*
- 62 Seneca Creek\*
- 63 Timberlake\*
- 64 Hoyt-Tilley\*
- 65 Cove Inlet\*
- 66 Lake Hartwell State Park
- 67 Barton's Mill\*
- 68 Port Bass\*
- 69 South Union\*
- 70 Bruce Creek\*
- 71 Holcomb\*
- 72 Tugaloo State Park
- 73 Franklin County\*
- 74 Rocky Ford\*
- 75 Reed Creek\*
- 76 Bradberry\*
- 77 Hart State Park

## Commercial Marinas

- 78 Big Water
- 79 Portman
- 80 Seneca
- 81 Harbor Light
- 82 Hartwell

\* Ramp access only